

\$539,900 - 21028 128 Avenue, Edmonton

MLS® #E4431702

\$539,900

3 Bedroom, 2.50 Bathroom, 1,701 sqft

Single Family on 0.00 Acres

Trumpeter Area, Edmonton, AB

Have you been looking for a great family home steps to Big Lake, St. Albert, & the accessibility of the Henday at a GREAT VALUE?! Welcome to this stunning 3 bedroom + main floor den home in the sought-after community of Trumpeter with SIDE ENTRY! BACKING ONTO A PARK, you'll enjoy peaceful views as you look out into GREEN-SPACE (rather than another house)! Step inside to 1700 sqft of modern living space featuring a bright, open layout, a chef's kitchen with sleek two-tone cabinetry, premium appliances, & elegant finishings throughout. The spacious bonus room adds flexible living space for a home office, playroom, or cozy movie nights. Unwind in your relaxing primary suite complete with spa-like 4pc ensuite with double sinks! Outside, enjoy summer evenings on your finished deck overlooking your fully landscaped yard—ready for entertaining or relaxing. This is the one you've been waiting for—beautifully finished, move-in ready, & perfectly located. Welcome home!

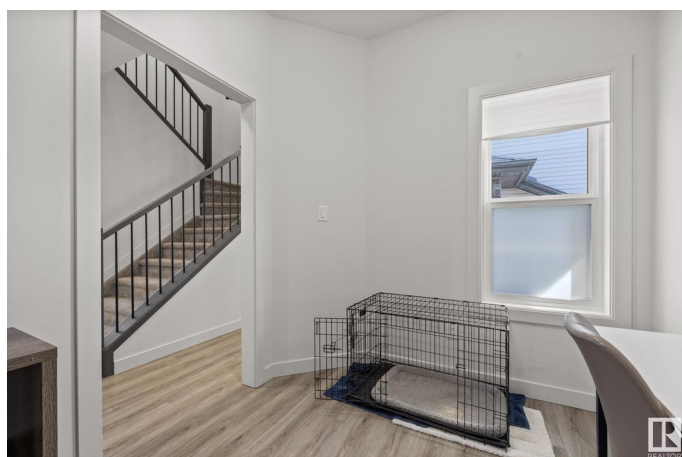
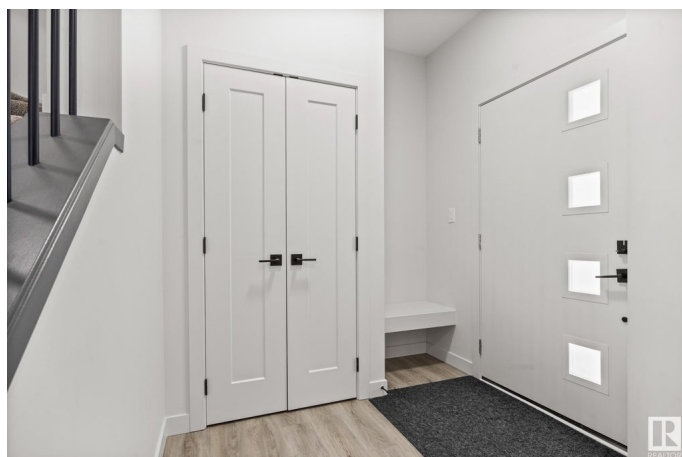
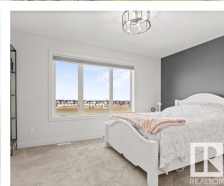
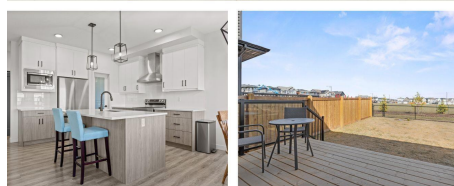
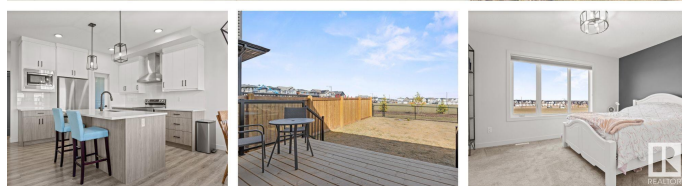
Built in 2023

Essential Information

MLS® # E4431702

Price \$539,900

Bedrooms 3



| | |
|----------------|------------------------|
| Bathrooms | 2.50 |
| Full Baths | 2 |
| Half Baths | 1 |
| Square Footage | 1,701 |
| Acres | 0.00 |
| Year Built | 2023 |
| Type | Single Family |
| Sub-Type | Detached Single Family |
| Style | 2 Storey |
| Status | Active |

Community Information

| | |
|-------------|------------------|
| Address | 21028 128 Avenue |
| Area | Edmonton |
| Subdivision | Trumpeter Area |
| City | Edmonton |
| County | ALBERTA |
| Province | AB |
| Postal Code | T5S 0R5 |

Amenities

| | |
|----------------|------------------------|
| Amenities | Ceiling 9 ft. |
| Parking Spaces | 2 |
| Parking | Double Garage Attached |

Interior

| | |
|-------------------|---|
| Interior Features | ensuite bathroom |
| Appliances | Dishwasher-Built-In, Dryer, Garage Opener, Hood Fan, Refrigerator, Stove-Electric, Washer |
| Heating | Forced Air-1, Natural Gas |
| Fireplace | Yes |
| Fireplaces | Insert |
| Stories | 2 |
| Has Basement | Yes |
| Basement | Full, Unfinished |

Exterior

| | |
|-------------------|-----------------------|
| Exterior | Wood, Vinyl |
| Exterior Features | Backs Onto Park/Trees |

| | |
|--------------|--------------------|
| Roof | Asphalt Shingles |
| Construction | Wood, Vinyl |
| Foundation | Concrete Perimeter |

Additional Information

| | |
|----------------|------------------|
| Date Listed | April 18th, 2025 |
| Days on Market | 11 |
| Zoning | Zone 59 |

DATA IS DEEMED RELIABLE BUT IS NOT GUARANTEED ACCURATE BY THE REALTORS® ASSOCIATION OF EDMONTON. COPYRIGHT 2025 BY THE REALTORS® ASSOCIATION OF EDMONTON. ALL RIGHTS RESERVED.Trademarks are owned or controlled by the Canadian Real Estate Association (CREA) and identify real estate professionals who are members of CREA (REALTOR®, REALTORS®) and/or the quality of services they provide (MLS®, Multiple Listing Service®)

Listing information last updated on April 29th, 2025 at 4:47am MDT