

\$264,900 - 24 Lacombe Point(e), St. Albert

MLS® #E4431655

\$264,900

3 Bedroom, 1.50 Bathroom, 1,295 sqft
Condo / Townhouse on 0.00 Acres

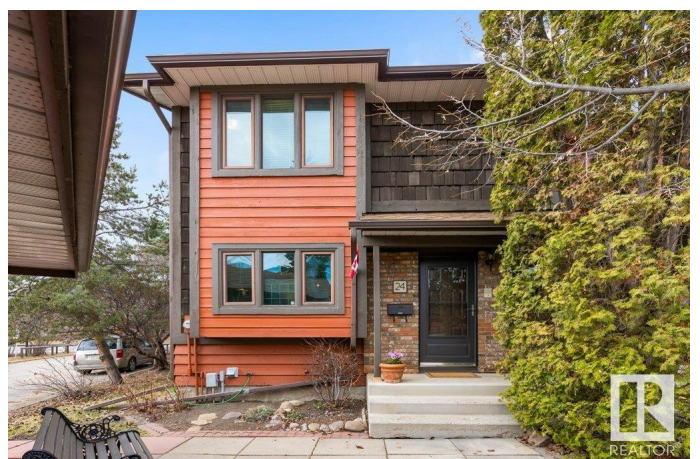
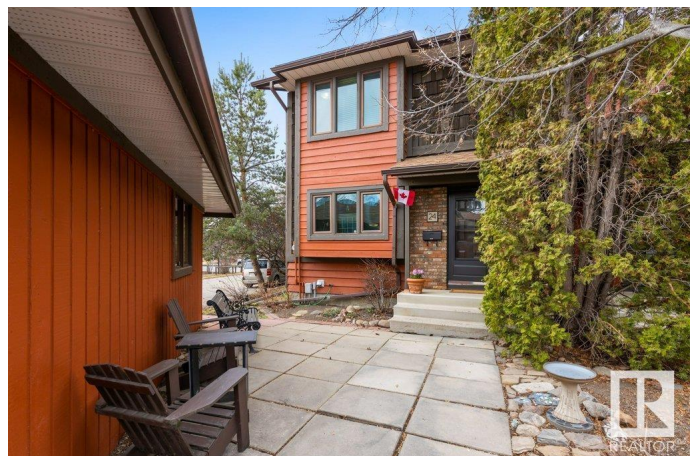
Lacombe Park, St. Albert, AB

Step into a world of elegance with this breathtaking residence that radiates artistic charm at every turn! Meticulously maintained throughout-this home is a true sanctuary. Imagine cooking in your chef-inspired, eat-in kitchen, complete with all appliances & clever kick plate drawers. Fabulous Living room, highlighted by a feature gas fireplace, inviting relaxation, while the spacious formal dining room makes entertaining a breeze. Ascend the stunning staircase, showcasing exquisite custom mosaic details, to find three generously sized bedrooms and a beautifully appointed bathroom, also featuring unique mosaic artistry. Every inch of this home is infused with style and sophistication. End unit with the convenience of a single garage. Nestled in a park-like complex with mature trees, a welcoming clubhouse, and a delightful park area. This residence is just steps away from schools, parks, shopping & public transport. This is more than just a home; it's a lifestyle awaiting your arrival! Don't miss out!

Built in 1980

Essential Information

MLS® #	E4431655
Price	\$264,900



Bedrooms	3
Bathrooms	1.50
Full Baths	1
Half Baths	1
Square Footage	1,295
Acres	0.00
Year Built	1980
Type	Condo / Townhouse
Sub-Type	Townhouse
Style	2 Storey
Status	Active

Community Information

Address	24 Lacombe Point(e)
Area	St. Albert
Subdivision	Lacombe Park
City	St. Albert
County	ALBERTA
Province	AB
Postal Code	T8N 3P7

Amenities

Amenities	Closet Organizers, No Animal Home, No Smoking Home, Parking-Visitor, Party Room, Social Rooms
Parking Spaces	2
Parking	Single Garage Detached

Interior

Appliances	Dishwasher-Built-In, Dryer, Garage Control, Garage Opener, Hood Fan, Refrigerator, Stove-Electric, Washer, Window Coverings, See Remarks
Heating	Forced Air-1, Natural Gas
Fireplace	Yes
Fireplaces	Mantel, Tile Surround
Stories	2
Has Basement	Yes
Basement	Full, Unfinished

Exterior

Exterior	Wood, Brick
----------	-------------

Exterior Features	Flat Site, Fruit Trees/Shrubs, Golf Nearby, Landscaped, No Back Lane, Park/Reserve, Picnic Area, Playground Nearby, Private Setting, Public Transportation, Schools, Shopping Nearby
Roof	Asphalt Shingles
Construction	Wood, Brick
Foundation	Concrete Perimeter

Additional Information

Date Listed	April 18th, 2025
Days on Market	4
Zoning	Zone 24
Condo Fee	\$532

DATA IS DEEMED RELIABLE BUT IS NOT GUARANTEED ACCURATE BY THE REALTORS® ASSOCIATION OF EDMONTON. COPYRIGHT 2025 BY THE REALTORS® ASSOCIATION OF EDMONTON. ALL RIGHTS RESERVED. Trademarks are owned or controlled by the Canadian Real Estate Association (CREA) and identify real estate professionals who are members of CREA (REALTOR®, REALTORS®) and/or the quality of services they provide (MLS®, Multiple Listing Service®)

Listing information last updated on April 22nd, 2025 at 11:17am MDT