

\$429,800 - 11842 21 Avenue, Edmonton

MLS® #E4431641

\$429,800

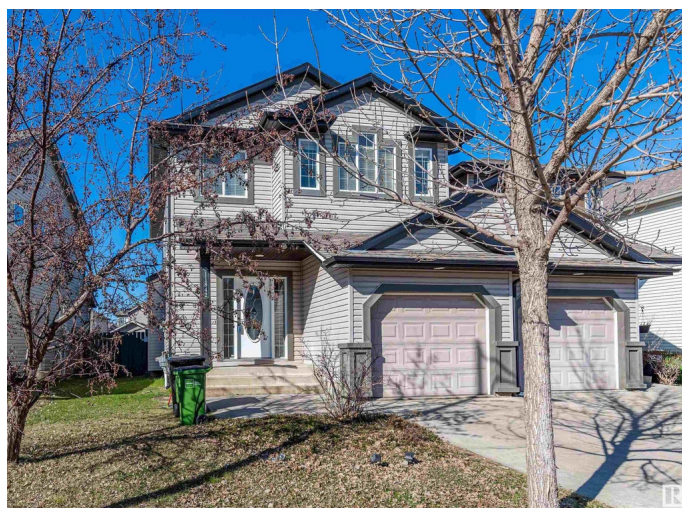
3 Bedroom, 1.50 Bathroom, 1,527 sqft

Single Family on 0.00 Acres

Rutherford (Edmonton), Edmonton, AB

NO CONDO FEES! Welcome to this upgraded 1,527 sqft 2 storey Half Duplex home in the heart of Rutherford! This spacious home boasts a very functional floor plan on both levels. Main floor has an open concept design featuring a spacious foyer, a living room with a gas fireplace plus a TV niche. FRESH paint throughout. Kitchen has BRAND NEW quartz countertops, appliances and a corner pantry. Upstairs, you'll find a large BONUS room w/ a vaulted ceiling & a computer area. Primary bedroom has a walk-through closet with a cheater door to the 4pc main bath. TWO more good sized bedrooms on this level. Brand new carpet. Close to schools, parks, and transit. Walking distance to Heritage Town Centre.

Built in 2006



Essential Information

MLS® #	E4431641
Price	\$429,800
Bedrooms	3
Bathrooms	1.50
Full Baths	1
Half Baths	1
Square Footage	1,527
Acres	0.00
Year Built	2006

Type	Single Family
Sub-Type	Half Duplex
Style	2 Storey
Status	Active

Community Information

Address	11842 21 Avenue
Area	Edmonton
Subdivision	Rutherford (Edmonton)
City	Edmonton
County	ALBERTA
Province	AB
Postal Code	T6W 0C9

Amenities

Amenities	Deck, Hot Water Natural Gas, Vaulted Ceiling, Vinyl Windows
Parking Spaces	2
Parking	Single Garage Attached

Interior

Appliances	Dishwasher-Built-In, Dryer, Garage Control, Garage Opener, Hood Fan, Refrigerator, Stove-Electric, Washer
Heating	Forced Air-1, Natural Gas
Stories	2
Has Basement	Yes
Basement	Full, Unfinished

Exterior

Exterior	Wood, Vinyl
Exterior Features	Fenced, Flat Site, Landscaped, Playground Nearby, Public Transportation, Schools, Shopping Nearby
Roof	Asphalt Shingles
Construction	Wood, Vinyl
Foundation	Slab

School Information

Elementary	Johnny Bright School
Middle	Johnny Bright School
High	Dr. Anne Anderson School

Additional Information

Date Listed April 18th, 2025
Days on Market 1
Zoning Zone 55



DATA IS DEEMED RELIABLE BUT IS NOT GUARANTEED ACCURATE BY THE REALTORS® ASSOCIATION OF EDMONTON. COPYRIGHT 2025 BY THE REALTORS® ASSOCIATION OF EDMONTON. ALL RIGHTS RESERVED. Trademarks are owned or controlled by the Canadian Real Estate Association (CREA) and identify real estate professionals who are members of CREA (REALTOR®, REALTORS®) and/or the quality of services they provide (MLS®, Multiple Listing Service®)

Listing information last updated on April 19th, 2025 at 4:47pm MDT