

\$235,000 - 212 1230 Windermere Way, Edmonton

MLS® #E4431499

\$235,000

2 Bedroom, 2.00 Bathroom, 752 sqft

Condo / Townhouse on 0.00 Acres

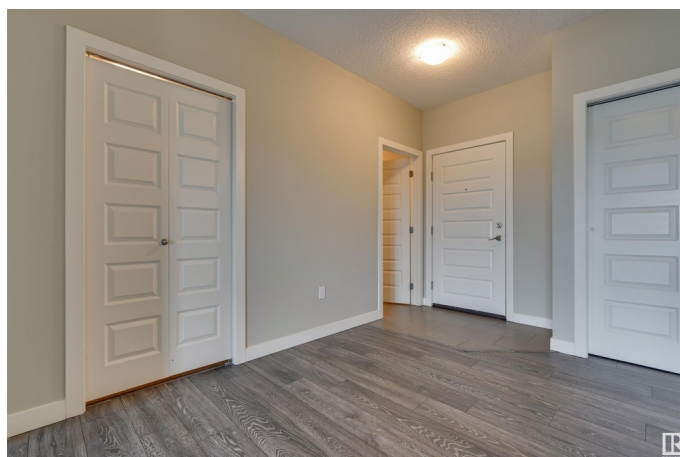
Windermere, Edmonton, AB

This clean, well-maintained condo offers 2 spacious bedrooms and 2 full bathrooms, perfectly located in desirable Windermere. The kitchen with espresso cabinets, granite counter top, breakfast bar, stainless steel appliances, is the hub and opens onto the Living room with vinyl plank flooring and patio doors to balcony. Enjoy stunning views of the pond, & great walking paths! The primary bedroom has a large walk thru closet to 3 pce ensuite and the second bedroom is perfect for family or a roommate with second full bath just steps away. In suite laundry and underground parking completes the package. Close to schools, shopping, & entertainment. Restaurants and all amenities just across the street, plus quick access to Anthony Henday.

Built in 2011

Essential Information

MLS® #	E4431499
Price	\$235,000
Bedrooms	2
Bathrooms	2.00
Full Baths	2
Square Footage	752
Acres	0.00
Year Built	2011



Type	Condo / Townhouse
Sub-Type	Lowrise Apartment
Style	Single Level Apartment
Status	Active

Community Information

Address	212 1230 Windermere Way
Area	Edmonton
Subdivision	Windermere
City	Edmonton
County	ALBERTA
Province	AB
Postal Code	T6W 2J3

Amenities

Amenities	Ceiling 9 ft., Closet Organizers, Detectors Smoke, Parking-Visitor, Vinyl Windows
Parking Spaces	1
Parking	Underground
Is Waterfront	Yes

Interior

Interior Features	ensuite bathroom
Appliances	Dishwasher-Built-In, Microwave Hood Fan, Refrigerator, Stacked Washer/Dryer, Stove-Electric, Window Coverings
Heating	In Floor Heat System, Natural Gas
# of Stories	5
Stories	1
Has Basement	Yes
Basement	None, No Basement

Exterior

Exterior	Steel, Stone, Stucco
Exterior Features	Backs Onto Lake, Backs Onto Park/Trees, Golf Nearby, Landscaped, Public Transportation, Schools, Shopping Nearby
Roof	Tar & Gravel
Construction	Steel, Stone, Stucco
Foundation	Concrete Perimeter

School Information

Elementary	Constable Daniel Woodall
Middle	St John XXIII

Additional Information

Date Listed	April 17th, 2025
Days on Market	2
Zoning	Zone 56
Condo Fee	\$434

DATA IS DEEMED RELIABLE BUT IS NOT GUARANTEED ACCURATE BY THE REALTORS® ASSOCIATION OF EDMONTON. COPYRIGHT 2025 BY THE REALTORS® ASSOCIATION OF EDMONTON. ALL RIGHTS RESERVED.Trademarks are owned or controlled by the Canadian Real Estate Association (CREA) and identify real estate professionals who are members of CREA (REALTOR®, REALTORS®) and/or the quality of services they provide (MLS®, Multiple Listing Service®)

Listing information last updated on April 19th, 2025 at 2:32pm MDT