

## \$144,000 - 901 10140 120 Street, Edmonton

MLS® #E4430721

**\$144,000**

2 Bedroom, 1.50 Bathroom, 908 sqft

Condo / Townhouse on 0.00 Acres

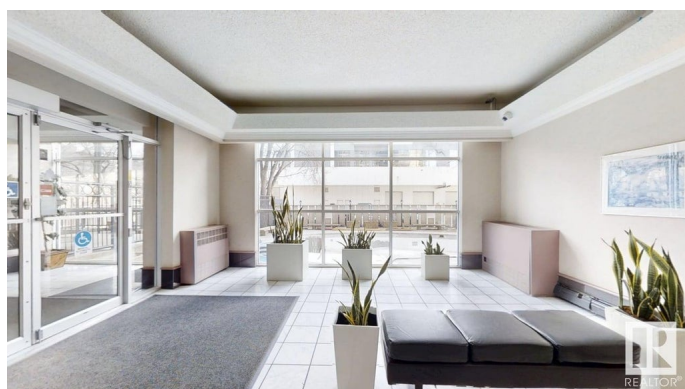
WÃ@hkwÃªntÃ´win, Edmonton, AB

Downtown living meets peaceful retreat in this 2-bedroom condo at Glenora Manor. Situated in a quiet, concrete building just minutes from the River Valley, Jasper Ave, and major transit routes to Grant MacEwan and the University of Alberta. This spacious unit offers over 900 sq ft with large north-facing windows. Enjoy standout amenities like an outdoor pool, sauna, and fitness roomâ€”rare finds in downtown condo living. Underground parking and all utilities included in the condo fees make it a smart choice for students, professionals, or investors seeking value, comfort, and convenience in central Edmonton.

Built in 1969

### Essential Information

MLS® #	E4430721
Price	\$144,000
Bedrooms	2
Bathrooms	1.50
Full Baths	1
Half Baths	1
Square Footage	908
Acres	0.00
Year Built	1969
Type	Condo / Townhouse



Sub-Type	Apartment High Rise
Style	Single Level Apartment
Status	Active

### Community Information

Address	901 10140 120 Street
Area	Edmonton
Subdivision	WÃ©hkwÃ©ntÃ©win
City	Edmonton
County	ALBERTA
Province	AB
Postal Code	T5K 1Z8

### Amenities

Amenities	Detectors Smoke, Exercise Room, Pool-Outdoor, Sauna; Swirlpool; Steam, See Remarks
Parking Spaces	1
Parking	Underground
Has Pool	Yes

### Interior

Interior Features	ensuite bathroom
Appliances	Dishwasher-Built-In, Refrigerator, Stove-Electric, Window Coverings
Heating	Hot Water, Natural Gas
# of Stories	16
Stories	1
Has Basement	Yes
Basement	None, No Basement

### Exterior

Exterior	Concrete, Stucco
Exterior Features	Golf Nearby, Park/Reserve, Public Transportation, Shopping Nearby, View City, View Downtown
Roof	Tar & Gravel
Construction	Concrete, Stucco
Foundation	Slab

### Additional Information

Date Listed	April 14th, 2025
-------------	------------------

Days on Market 5  
Zoning Zone 12  
Condo Fee \$792



DATA IS DEEMED RELIABLE BUT IS NOT GUARANTEED ACCURATE BY THE REALTORS® ASSOCIATION OF EDMONTON. COPYRIGHT 2025 BY THE REALTORS® ASSOCIATION OF EDMONTON. ALL RIGHTS RESERVED.Trademarks are owned or controlled by the Canadian Real Estate Association (CREA) and identify real estate professionals who are members of CREA (REALTOR®, REALTORS®) and/or the quality of services they provide (MLS®, Multiple Listing Service®)  
Listing information last updated on April 19th, 2025 at 12:47pm MDT