

\$489,117 - 5 Adamic Crescent, Leduc

MLS® #E4429882

\$489,117

4 Bedroom, 3.00 Bathroom, 1,429 sqft

Single Family on 0.00 Acres

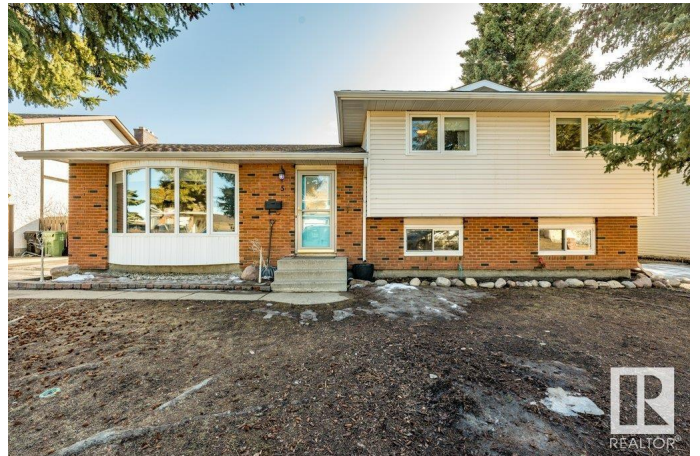
Leduc Estates, Leduc, AB

Recently Renovated 4-Level Split – Perfect for Family Living This updated 4-level split offers multiple levels of family space, fully renovated in 2017. The main floor boasts a modern kitchen, spacious dining room, and large living room with engineered hardwood throughout. The upper level features 3 bedrooms, including a master suite with ensuite, plus a full bathroom. The lower level includes a family room, a fourth bedroom, and a third full bathroom. The basement offers flexible space for a media room and a large laundry area. Located near Fred Johns Park and the Leduc Reservoir walking paths, Leduc Golf and Country Club and offers easy access to outdoor recreation. The property features an oversized double heated garage, an extra-long driveway, and a fenced backyard with a large deck. Freshly painted with new kitchen, bathrooms, and flooring, this home is move-in ready! Family Friendly! Pet Friendly! Park Friendly! Perfectly Friendly for Friends! Excellent Location! Massive Garage!

Built in 1978

Essential Information

MLS® #	E4429882
Price	\$489,117
Bedrooms	4



Bathrooms	3.00
Full Baths	3
Square Footage	1,429
Acres	0.00
Year Built	1978
Type	Single Family
Sub-Type	Detached Single Family
Style	4 Level Split
Status	Active

Community Information

Address	5 Adamic Crescent
Area	Leduc
Subdivision	Leduc Estates
City	Leduc
County	ALBERTA
Province	AB
Postal Code	T9E 5J4

Amenities

Amenities	Deck, No Smoking Home, Patio, See Remarks
Parking	Double Garage Detached, Heated, Insulated, Over Sized

Interior

Interior Features	ensuite bathroom
Appliances	Dishwasher-Built-In, Dryer, Freezer, Garage Opener, Refrigerator, Stove-Electric, Washer, Window Coverings, Garage Heater
Heating	Forced Air-1, Natural Gas
Stories	4
Has Basement	Yes
Basement	Full, Finished

Exterior

Exterior	Wood, Brick, Composition
Exterior Features	Fenced, Flat Site, Golf Nearby, Landscaped, Level Land, Low Maintenance Landscape, No Back Lane, Treed Lot, See Remarks
Roof	Asphalt Shingles
Construction	Wood, Brick, Composition
Foundation	Concrete Perimeter

Additional Information

Date Listed	April 9th, 2025
Days on Market	14
Zoning	Zone 81

DATA IS DEEMED RELIABLE BUT IS NOT GUARANTEED ACCURATE BY THE REALTORS® ASSOCIATION OF EDMONTON. COPYRIGHT 2025 BY THE REALTORS® ASSOCIATION OF EDMONTON. ALL RIGHTS RESERVED.Trademarks are owned or controlled by the Canadian Real Estate Association (CREA) and identify real estate professionals who are members of CREA (REALTOR®, REALTORS®) and/or the quality of services they provide (MLS®, Multiple Listing Service®)

Listing information last updated on April 22nd, 2025 at 11:32pm MDT