

Courtesy Of Gary Virk Of MaxWell Polaris

# \$619,900 - 760 Astoria Way, Devon

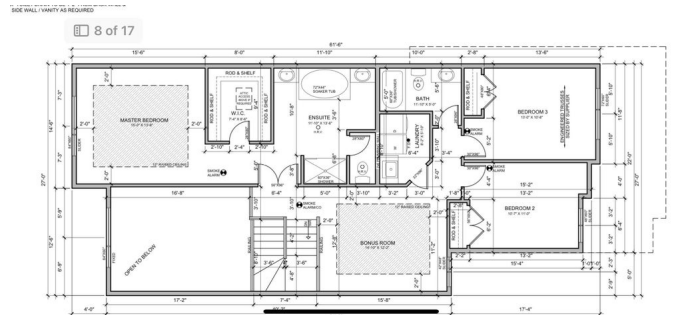
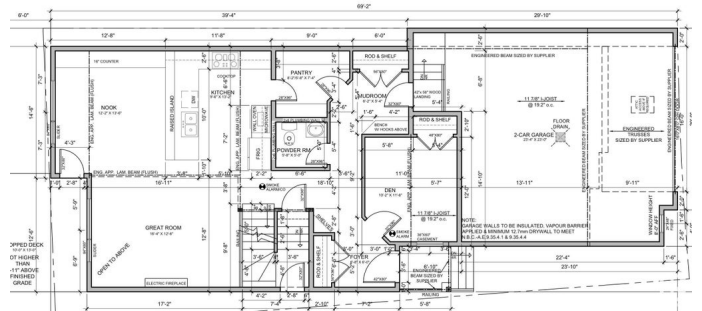
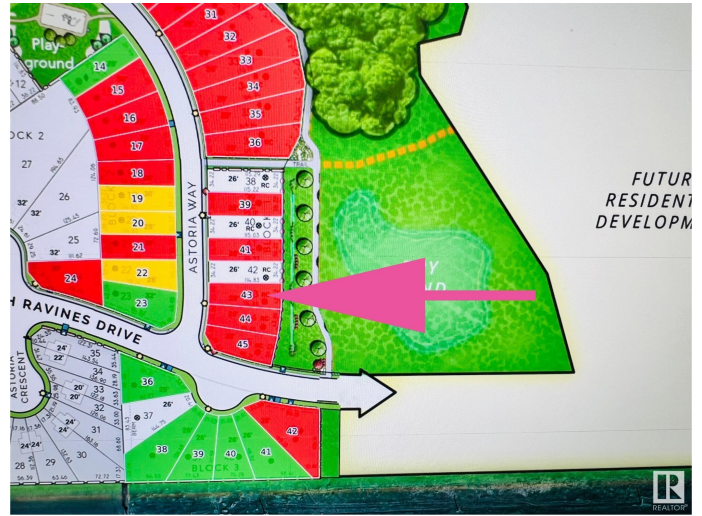
MLS® #E4429616

**\$619,900**

4 Bedroom, 2.50 Bathroom, 2,350 sqft  
Single Family on 0.00 Acres

Devon, Devon, AB

**\*\* BACKS To Natural POND\*\*** This is a PRE-Sale & Will be Ready For Possession End Of July.. Fully Upgraded 2350 sq with 4 Bedrooms + 2.5 bathroom, Bonus Room & **\*\*Double car Garage\*\*** on main Floor Open to Below Living Area With Fireplace, Ceiling Height Kitchen with \$5000 Appliances Credit & Quartz Countertops, Also Main Floor BEDROOM & Half-Bath, Rear Door Open to Sun-Deck.. Maple Spindle Railing lead to 2nd Level, Master Bedroom with Beautiful Pond View & Ensuite, 2 more bedrooms with Full Bathroom & Bonus Room For ur Entertainment, walk-in Laundry with Sink..  
**\*\*SEPARATE ENTRY** to Basement..  
Upgrades includes All 3 levels are 9 feet high with 8ft high doors, Vaulted Ceilings in Master bedroom with Rope Light, Tiles, vinyl Planks on main floor & upgraded Plumbing & Lightning Fixtures,SEPARATE ENTRY To Basement, & MUCH MORE,, Close To All Amenities.



Built in 2025

## Essential Information

MLS® #	E4429616
Price	\$619,900
Bedrooms	4
Bathrooms	2.50

Full Baths	2
Half Baths	1
Square Footage	2,350
Acres	0.00
Year Built	2025
Type	Single Family
Sub-Type	Detached Single Family
Style	2 Storey
Status	Active

### **Community Information**

Address	760 Astoria Way
Area	Devon
Subdivision	Devon
City	Devon
County	ALBERTA
Province	AB
Postal Code	T9G 0M7

### **Amenities**

Amenities	Carbon Monoxide Detectors, Ceiling 9 ft., Detectors Smoke, Hot Water Natural Gas, HRV System, 9 ft. Basement Ceiling
Parking	Double Garage Attached, Insulated, Over Sized

### **Interior**

Interior Features	ensuite bathroom
Appliances	Builder Appliance Credit
Heating	Forced Air-1, Natural Gas
Fireplace	Yes
Fireplaces	Insert
Stories	2
Has Basement	Yes
Basement	Full, Unfinished

### **Exterior**

Exterior	Wood, Metal, Stone, Vinyl
Exterior Features	Backs Onto Park/Trees, Playground Nearby, Schools, Shopping Nearby, Stream/Pond
Roof	Asphalt Shingles

Construction Wood, Metal, Stone, Vinyl  
Foundation Concrete Perimeter

### **Additional Information**

Date Listed April 6th, 2025  
Days on Market 9  
Zoning Zone 92

DATA IS DEEMED RELIABLE BUT IS NOT GUARANTEED ACCURATE BY THE REALTORS® ASSOCIATION OF EDMONTON. COPYRIGHT 2025 BY THE REALTORS® ASSOCIATION OF EDMONTON. ALL RIGHTS RESERVED. Trademarks are owned or controlled by the Canadian Real Estate Association (CREA) and identify real estate professionals who are members of CREA (REALTOR®, REALTORS®) and/or the quality of services they provide (MLS®, Multiple Listing Service®)

Listing information last updated on April 15th, 2025 at 5:32pm MDT