

# \$189,000 - 116 Surrey Gardens, Edmonton

MLS® #E4428333

**\$189,000**

3 Bedroom, 1.00 Bathroom, 1,045 sqft  
Condo / Townhouse on 0.00 Acres

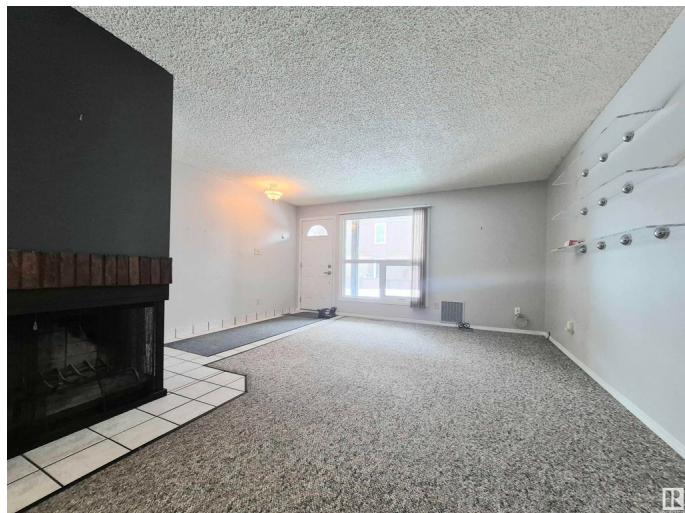
Lymburn, Edmonton, AB

Looking for a spacious home with a touch of nature? This exceptional 3-bedroom, 1,000+ sq.ft. end-unit condo in Surrey Gardens is the perfect retreat! Featuring its own private front yard with large, beautiful trees, this home offers tranquility and privacy. Enjoy your own covered patio and garden, a peaceful oasis for relaxation or entertaining. Located in the quiet, family-friendly Lymburn neighborhood, you'll have the best of both worlds: a serene setting just minutes away from all the essential amenities. Ready to move in and make it your own—this stylish, well-maintained unit is designed for modern living with comfort and convenience in mind. Don't miss out on this rare opportunity to live in a peaceful, private home with your own outdoor space!

Built in 1977

## Essential Information

MLS® #	E4428333
Price	\$189,000
Bedrooms	3
Bathrooms	1.00
Full Baths	1
Square Footage	1,045
Acres	0.00
Year Built	1977



Type	Condo / Townhouse
Sub-Type	Carriage
Style	Bungalow
Status	Active

### **Community Information**

Address	116 Surrey Gardens
Area	Edmonton
Subdivision	Lymburn
City	Edmonton
County	ALBERTA
Province	AB
Postal Code	T5T 1Z3

### **Amenities**

Amenities	Closet Organizers, Deck, Parking-Plug-Ins, Parking-Visitor, Vinyl Windows
Parking Spaces	1
Parking	Stall, See Remarks

### **Interior**

Appliances	Dishwasher-Built-In, Dryer, Fan-Ceiling, Hood Fan, Refrigerator, Stove-Electric, Washer
Heating	Forced Air-1, Natural Gas
Fireplace	Yes
Fireplaces	Corner
Stories	1
Has Basement	Yes
Basement	None, No Basement

### **Exterior**

Exterior	Wood, Stucco
Exterior Features	Playground Nearby, Public Transportation, Schools, Shopping Nearby, Treed Lot
Roof	Asphalt Shingles
Construction	Wood, Stucco
Foundation	Concrete Perimeter

### **Additional Information**

Date Listed	March 31st, 2025
-------------	------------------

Days on Market	12
Zoning	Zone 20
Condo Fee	\$529

DATA IS DEEMED RELIABLE BUT IS NOT GUARANTEED ACCURATE BY THE REALTORS® ASSOCIATION OF EDMONTON. COPYRIGHT 2025 BY THE REALTORS® ASSOCIATION OF EDMONTON. ALL RIGHTS RESERVED. Trademarks are owned or controlled by the Canadian Real Estate Association (CREA) and identify real estate professionals who are members of CREA (REALTOR®, REALTORS®) and/or the quality of services they provide (MLS®, Multiple Listing Service®)

Listing information last updated on April 12th, 2025 at 5:17am MDT