

# \$499,900 - 5240 Kinney Place, Edmonton

MLS® #E4427367

**\$499,900**

3 Bedroom, 2.50 Bathroom, 1,470 sqft  
Single Family on 0.00 Acres

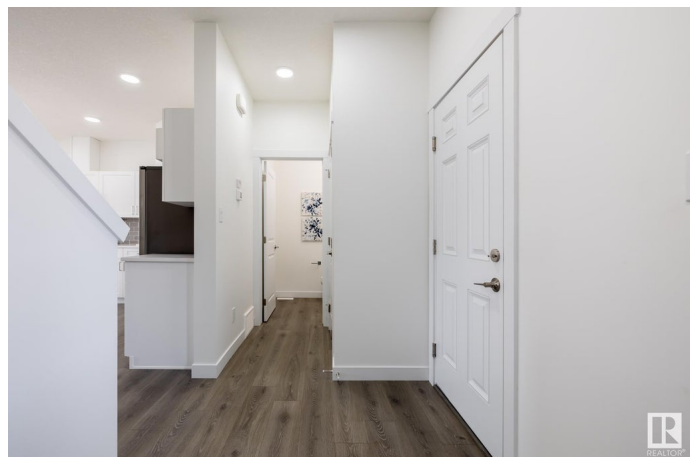
Keswick Area, Edmonton, AB

Located in the heart of Windermere, Keswick Landing is a thriving new community that embodies style, value and location. You can your family can enjoy the benefits of a community that continues to grow as you do! With over 1450 square feet of open concept living space, the Soho-D is built with your growing family in mind. This duplex home features 3 bedrooms, 2.5 bathrooms and chrome faucets throughout. Enjoy extra living space on the main floor with the laundry room and full sink on the second floor. The 9-foot ceilings and quartz countertops throughout blends style and functionality for your family to build endless memories. PICTURES ARE OF SHOWHOME; ACTUAL HOME, PLANS, FIXTURES, AND FINISES MAY VARY & SUBJECT TO AVAILABILITY/CHANGES!

Built in 2024

## Essential Information

|                |           |
|----------------|-----------|
| MLS® #         | E4427367  |
| Price          | \$499,900 |
| Bedrooms       | 3         |
| Bathrooms      | 2.50      |
| Full Baths     | 2         |
| Half Baths     | 1         |
| Square Footage | 1,470     |
| Acres          | 0.00      |



|            |               |
|------------|---------------|
| Year Built | 2024          |
| Type       | Single Family |
| Sub-Type   | Half Duplex   |
| Style      | 2 Storey      |
| Status     | Active        |

### **Community Information**

|             |                   |
|-------------|-------------------|
| Address     | 5240 Kinney Place |
| Area        | Edmonton          |
| Subdivision | Keswick Area      |
| City        | Edmonton          |
| County      | ALBERTA           |
| Province    | AB                |
| Postal Code | T6W 1A8           |

### **Amenities**

|                |                                    |
|----------------|------------------------------------|
| Amenities      | See Remarks                        |
| Parking Spaces | 2                                  |
| Parking        | Over Sized, Single Garage Attached |

### **Interior**

|                   |                           |
|-------------------|---------------------------|
| Interior Features | ensuite bathroom          |
| Appliances        | None                      |
| Heating           | Forced Air-1, Natural Gas |
| Stories           | 2                         |
| Has Basement      | Yes                       |
| Basement          | Full, Unfinished          |

### **Exterior**

|                   |   |
|-------------------|---|
| Exterior          | Wood, Vinyl                             |
| Exterior Features | Not Fenced, Not Landscaped, See Remarks |
| Roof              | Asphalt Shingles                        |
| Construction      | Wood, Vinyl                             |
| Foundation        | Concrete Perimeter                      |

### **Additional Information**

|                |                  |
|----------------|------------------|
| Date Listed    | March 25th, 2025 |
| Days on Market | 15               |
| Zoning         | Zone 56          |

DATA IS DEEMED RELIABLE BUT IS NOT GUARANTEED ACCURATE BY THE REALTORS® ASSOCIATION OF EDMONTON. COPYRIGHT 2025 BY THE REALTORS® ASSOCIATION OF EDMONTON. ALL RIGHTS RESERVED. Trademarks are owned or controlled by the Canadian Real Estate Association (CREA) and identify real estate professionals who are members of CREA (REALTOR®, REALTORS®) and/or the quality of services they provide (MLS®, Multiple Listing Service®)

Listing information last updated on April 9th, 2025 at 6:02am MDT