

\$475,000 - 4831 148 Avenue, Edmonton

MLS® #E4427330

\$475,000

4 Bedroom, 3.50 Bathroom, 1,462 sqft
Single Family on 0.00 Acres

Miller, Edmonton, AB

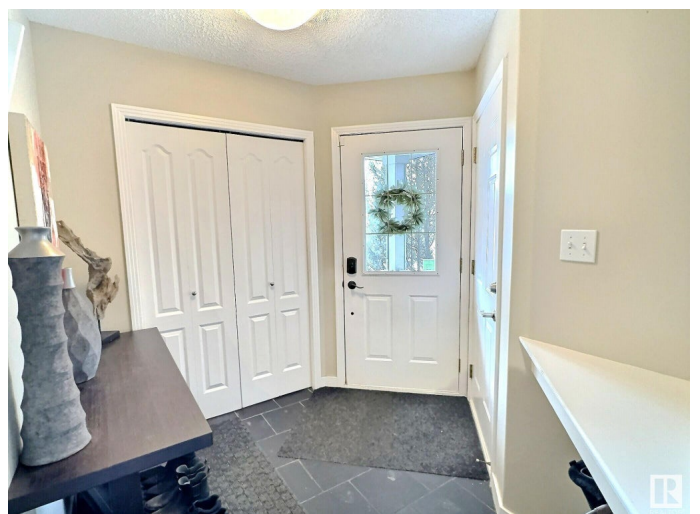
Step into this inviting four-bedroom, three-and-a-half-bathroom family home, nestled at the end of a quiet cul-de-sac in the charming Miller neighbourhood. Designed with the modern family in mind, this house boasts an open-concept kitchen that serves as the heart of the home, complete with warm wood cabinets, elegant stone countertops, and stainless-steel appliances. The island overlooks a cozy living room, featuring rich hardwood floors and a centrepiece gas fireplace. Complete with the convenience of main floor laundry and a half bath. Discover on the second floor three well-proportioned bedrooms, including a primary bedroom that offers a full 3-piece ensuite and walk-in closet. The fully finished basement is a versatile space with a large recreational room, abundant storage, and a second washer and dryer, catering to the needs of a bustling household. Outdoors, the dining room opens onto a deck sheltered by a gazebo, leading to a spacious, treed yard. Near amenities, schools, parks and public transit.

Built in 2001

Essential Information

MLS® # E4427330

Price \$475,000



Bedrooms	4
Bathrooms	3.50
Full Baths	3
Half Baths	1
Square Footage	1,462
Acres	0.00
Year Built	2001
Type	Single Family
Sub-Type	Detached Single Family
Style	2 Storey
Status	Active

Community Information

Address	4831 148 Avenue
Area	Edmonton
Subdivision	Miller
City	Edmonton
County	ALBERTA
Province	AB
Postal Code	T5Y 2X1

Amenities

Amenities	Deck, Natural Gas BBQ Hookup
Parking	Double Garage Attached

Interior

Interior Features	ensuite bathroom
Appliances	Dishwasher-Built-In, Microwave Hood Fan, Refrigerator, Stove-Electric, Window Coverings, Dryer-Two, Washers-Two
Heating	Forced Air-1, Natural Gas
Stories	3
Has Basement	Yes
Basement	Full, Finished

Exterior

Exterior	Wood, Vinyl
Exterior Features	Cul-De-Sac, Fenced, Golf Nearby, Landscaped, No Back Lane, Playground Nearby, Public Transportation, Schools, Shopping Nearby
Roof	Asphalt Shingles

Construction Wood, Vinyl
Foundation Concrete Perimeter

Additional Information

Date Listed March 24th, 2025
Days on Market 15
Zoning Zone 02

DATA IS DEEMED RELIABLE BUT IS NOT GUARANTEED ACCURATE BY THE REALTORS® ASSOCIATION OF EDMONTON. COPYRIGHT 2025 BY THE REALTORS® ASSOCIATION OF EDMONTON. ALL RIGHTS RESERVED. Trademarks are owned or controlled by the Canadian Real Estate Association (CREA) and identify real estate professionals who are members of CREA (REALTOR®, REALTORS®) and/or the quality of services they provide (MLS®, Multiple Listing Service®)

Listing information last updated on April 8th, 2025 at 9:17am MDT