

## \$190,000 - 307 9504 182 Street, Edmonton

MLS® #E4426754

**\$190,000**

2 Bedroom, 1.50 Bathroom, 981 sqft

Condo / Townhouse on 0.00 Acres

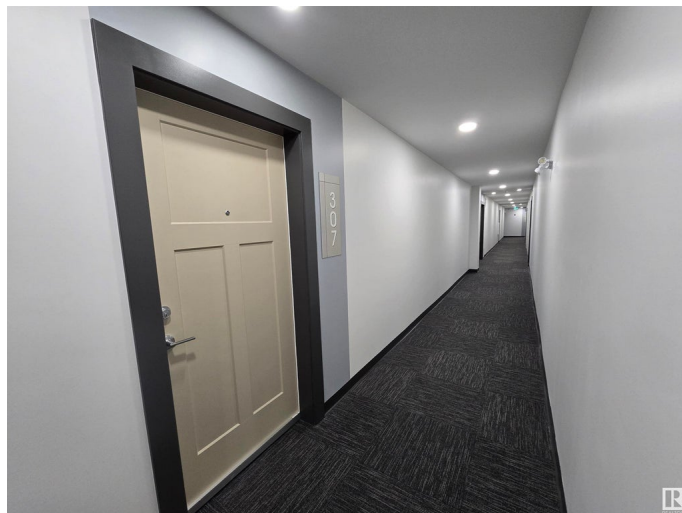
La Perle, Edmonton, AB

WOW! Absolutely gorgeous, newly built 2 bedroom, 2 bathroom condo, modern & luxurious! Ideally located close to parks, shopping (West Edm Mall), schools. Stunning bright & white NEW modern Kitchen, with granite counter tops, plus dining area. Huge sunken living room with gorgeous wall mounted electric fireplace & patio doors to huge balcony. Master bedroom has patio entrance to very large balcony, huge walk into closet, plus 2pc ensuite. Second very spacious bedroom, large 4pc main bath, granite counters throughout, in suite laundry plus HUGE enclosed storage unit, as well as storage lockers on same floor. This is a PRIME LOCATION!

Built in 1979

### Essential Information

MLS® #	E4426754
Price	\$190,000
Bedrooms	2
Bathrooms	1.50
Full Baths	1
Half Baths	1
Square Footage	981
Acres	0.00
Year Built	1979



Type	Condo / Townhouse
Sub-Type	Lowrise Apartment
Style	Single Level Apartment
Status	Active

### Community Information

Address	307 9504 182 Street
Area	Edmonton
Subdivision	La Perle
City	Edmonton
County	ALBERTA
Province	AB
Postal Code	T5T 3A7

### Amenities

Amenities	Parking-Plug-Ins, Parking-Visitor
Parking Spaces	1
Parking	Stall

### Interior

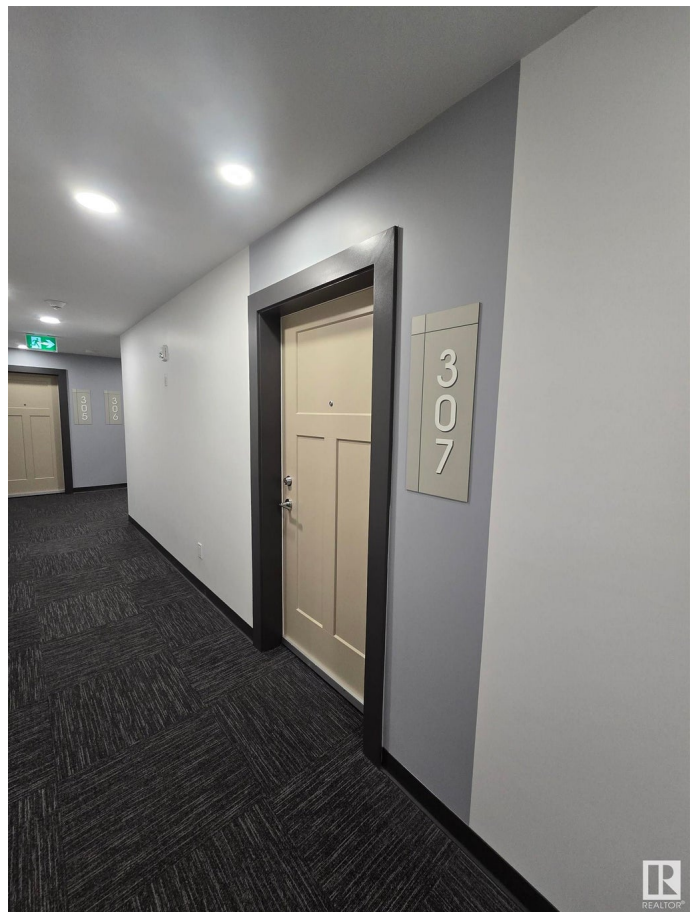
Interior Features	ensuite bathroom
Appliances	Dishwasher-Built-In, Dryer, Microwave Hood Fan, Refrigerator, Stove-Electric, Washer
Heating	Baseboard, Natural Gas
Fireplace	Yes
Fireplaces	Wall Mount
# of Stories	4
Stories	1
Has Basement	Yes
Basement	None, No Basement

### Exterior

Exterior	Wood, Vinyl
Exterior Features	Corner Lot, Landscaped, Public Swimming Pool, Public Transportation, Schools
Roof	Asphalt Shingles
Construction	Wood, Vinyl
Foundation	Concrete Perimeter

### Additional Information

Date Listed	March 20th, 2025
Days on Market	30
Zoning	Zone 20
Condo Fee	\$456



DATA IS DEEMED RELIABLE BUT IS NOT GUARANTEED ACCURATE BY THE REALTORS® ASSOCIATION OF EDMONTON. COPYRIGHT 2025 BY THE REALTORS® ASSOCIATION OF EDMONTON. ALL RIGHTS RESERVED. Trademarks are owned or controlled by the Canadian Real Estate Association (CREA) and identify real estate professionals who are members of CREA (REALTOR®, REALTORS®) and/or the quality of services they provide (MLS®, Multiple Listing Service®)

Listing information last updated on April 19th, 2025 at 10:32am MDT