

Courtesy Of Fadi Georgi and Megan Benoit Of MaxWell Polaris

# \$649,888 - 5811 Kootook Link, Edmonton

MLS® #E4426618

**\$649,888**

3 Bedroom, 2.50 Bathroom, 2,167 sqft  
Single Family on 0.00 Acres

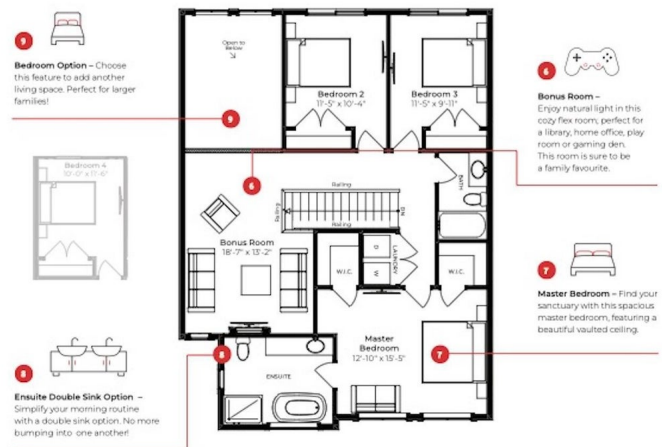
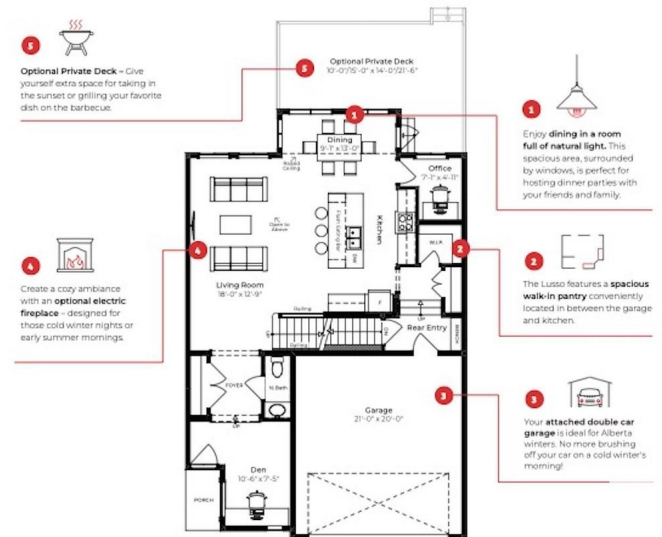
Keswick Area, Edmonton, AB

Single family home designed for modern living in Arbours of Keswick! Featuring double attached garage and \$5K appliance allowance. Step inside to find a thoughtfully designed main floor, starting with a versatile den at the entrance. The open-concept living area with open to above ceilings, seamlessly connecting the dining space and dream kitchen. The kitchen is a chef's delight, featuring 3m quartz countertops, stylish light wood-toned cabinetry, and a walk-in pantry. A dedicated office off the kitchen provides a space for work or study. Upstairs, an bonus room offers additional living space, accompanied by a full bathroom, laundry room, and three generously sized bedrooms. The luxurious primary suite is a true retreat, featuring two walk-in closets and a spa-inspired ensuite with double sinks, a walk-in shower, and a relaxing soaker tub. Don't miss this incredible opportunity—your dream home awaits! Under construction w/ tent completion Aug. Photos are renderings of interior colors only. HOA TBD

Built in 2025

## Essential Information

MLS® # E4426618  
Price \$649,888



Bedrooms	3
Bathrooms	2.50
Full Baths	2
Half Baths	1
Square Footage	2,167
Acres	0.00
Year Built	2025
Type	Single Family
Sub-Type	Detached Single Family
Style	2 Storey
Status	Active

### **Community Information**

Address	5811 Kootook Link
Area	Edmonton
Subdivision	Keswick Area
City	Edmonton
County	ALBERTA
Province	AB
Postal Code	T6W 4Z6

### **Amenities**

Amenities	Ceiling 9 ft., See Remarks
Parking	Double Garage Attached

### **Interior**

Interior Features	ensuite bathroom
Appliances	Garage Control, Garage Opener, Hood Fan, See Remarks
Heating	Forced Air-1, Natural Gas
Stories	2
Has Basement	Yes
Basement	Full, Unfinished

### **Exterior**

Exterior	Wood, Vinyl, Hardie Board Siding
Exterior Features	Airport Nearby, Playground Nearby, Schools, Shopping Nearby, Stream/Pond, See Remarks
Roof	Asphalt Shingles
Construction	Wood, Vinyl, Hardie Board Siding

Foundation Concrete Perimeter

### **Additional Information**

Date Listed March 20th, 2025

Days on Market 23

Zoning Zone 56

HOA Fees 1

HOA Fees Freq. Annually

DATA IS DEEMED RELIABLE BUT IS NOT GUARANTEED ACCURATE BY THE REALTORS® ASSOCIATION OF EDMONTON. COPYRIGHT 2025 BY THE REALTORS® ASSOCIATION OF EDMONTON. ALL RIGHTS RESERVED. Trademarks are owned or controlled by the Canadian Real Estate Association (CREA) and identify real estate professionals who are members of CREA (REALTOR®, REALTORS®) and/or the quality of services they provide (MLS®, Multiple Listing Service®)

Listing information last updated on April 12th, 2025 at 11:32am MDT