

Courtesy Of Jeff D Jackson Of Bode

\$922,748 - 20932 26 Avenue, Edmonton

MLS® #E4425449

\$922,748

4 Bedroom, 3.00 Bathroom, 2,729 sqft
Single Family on 0.00 Acres

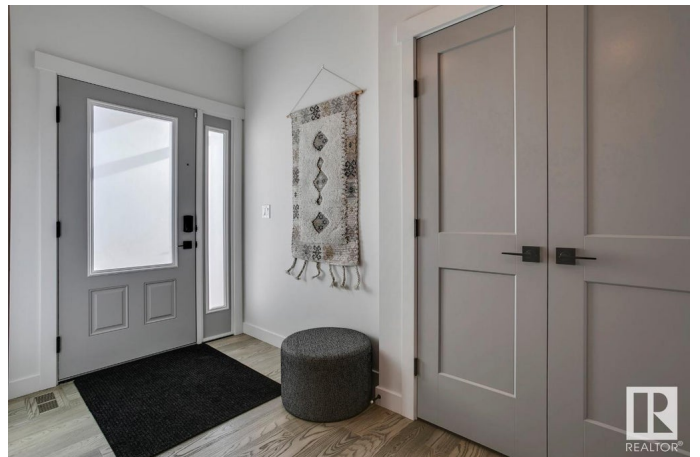
The Uplands, Edmonton, AB

Your best life begins with a home that inspires you. Presenting the Westport 32 by Parkwood Homes. This triple attached garage estate home in the growing SW community The Uplands is sure to impress. Backing onto the Wedgewood Creek Ravine, this home has been thoughtfully designed and built to appreciate the views from every space inside. Oversized windows flood the entire home with natural light. Tastefully designed using the best materials and selections for those that are looking to move sooner, without the wait of building, yet still having a professionally designed exterior/interior. This home checks all the boxes with large spacious bedrooms, a large upper floor laundry room, and bonus room, as well as the primary bedroom with views of the ravine + spa like 5 piece ensuite featuring a tiled shower, soaker tub, and double sinks! Photos are representative

Built in 2025

Essential Information

MLS® #	E4425449
Price	\$922,748
Bedrooms	4
Bathrooms	3.00
Full Baths	3
Square Footage	2,729



Acres	0.00
Year Built	2025
Type	Single Family
Sub-Type	Detached Single Family
Style	2 Storey
Status	Active

Community Information

Address	20932 26 Avenue
Area	Edmonton
Subdivision	The Uplands
City	Edmonton
County	ALBERTA
Province	AB
Postal Code	T6M 0N9

Amenities

Amenities	Closet Organizers, No Animal Home, No Smoking Home
Parking Spaces	6
Parking	Triple Garage Attached

Interior

Interior Features	ensuite bathroom
Appliances	Hood Fan, Oven-Microwave
Heating	Forced Air-1, Natural Gas
Fireplace	Yes
Fireplaces	Insert
Stories	2
Has Basement	Yes
Basement	Full, Unfinished

Exterior

Exterior	Wood, Stone, Vinyl
Exterior Features	Level Land, Playground Nearby, Schools, Shopping Nearby, Stream/Pond
Roof	Asphalt Shingles
Construction	Wood, Stone, Vinyl
Foundation	Concrete Perimeter

Additional Information

Date Listed March 13th, 2025

Days on Market 22

Zoning Zone 57

DATA IS DEEMED RELIABLE BUT IS NOT GUARANTEED ACCURATE BY THE REALTORS® ASSOCIATION OF EDMONTON. COPYRIGHT 2025 BY THE REALTORS® ASSOCIATION OF EDMONTON. ALL RIGHTS RESERVED. Trademarks are owned or controlled by the Canadian Real Estate Association (CREA) and identify real estate professionals who are members of CREA (REALTOR®, REALTORS®) and/or the quality of services they provide (MLS®, Multiple Listing Service®)

Listing information last updated on April 3rd, 2025 at 10:17pm MDT