

Courtesy Of Wally Karout Of Royal Lepage Arteam Realty

\$394,998 - 96 1430 Aster Way, Edmonton

MLS® #E4424713

\$394,998

3 Bedroom, 2.00 Bathroom, 1,071 sqft
Condo / Townhouse on 0.00 Acres

Aster, Edmonton, AB

Welcome to Broadview Homes newest product line the Village at Aster located in the hear of the South East Edmonton. These detached single family homes give you the opportunity to purchase a brand new single family home for the price of a duplex. These homes are nested in a private community that gives you a village like feeling. There are only a hand full of units in this Village like community which makes it family orientated. From the superior floor plans to the superior designs owning a unique family built home has never felt this good.

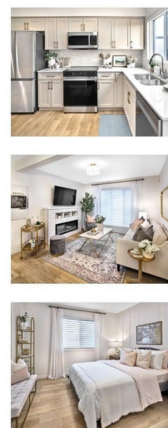
Located close to all amenities and easy access to major roads like the Henday and the whitemud drive. A Village fee of \$29 per month takes care of your road snow removal so you donâ€™t have too. All you have to do is move in and enjoy your new home. *** Under construction and to be complete in the Summer of 2025 , photos used are from the same home recently built but colors may vary

Built in 2025



SAGE

1071 sq. ft. | 3 bedrooms + 2 bathrooms



Essential Information

MLS® #	E4424713
Price	\$394,998
Bedrooms	3
Bathrooms	2.00

Dimensions as shown are approximations and may change without notice. Architectural requirements may alter side elevation and window placement on the E & C.E. January 2025

Full Baths	2
Square Footage	1,071
Acres	0.00
Year Built	2025
Type	Condo / Townhouse
Sub-Type	Detached Condominium
Style	2 Storey
Status	Active

Community Information

Address	96 1430 Aster Way
Area	Edmonton
Subdivision	Aster
City	Edmonton
County	ALBERTA
Province	AB
Postal Code	T6T 2N8

Amenities

Amenities	See Remarks
Parking	Parking Pad Cement/Paved

Interior

Interior Features	ensuite bathroom
Appliances	See Remarks
Heating	Forced Air-1, Natural Gas
Stories	2
Has Basement	Yes
Basement	Full, Unfinished

Exterior

Exterior	Wood, Stone, Vinyl
Exterior Features	Cul-De-Sac, Fenced, Landscaped, Park/Reserve, Playground Nearby, Private Setting, Public Swimming Pool, Public Transportation, Schools, Shopping Nearby, See Remarks
Roof	Asphalt Shingles
Construction	Wood, Stone, Vinyl
Foundation	Concrete Perimeter

Additional Information

Date Listed	March 6th, 2025
Days on Market	37
Zoning	Zone 30
Condo Fee	\$29

DATA IS DEEMED RELIABLE BUT IS NOT GUARANTEED ACCURATE BY THE REALTORS® ASSOCIATION OF EDMONTON. COPYRIGHT 2025 BY THE REALTORS® ASSOCIATION OF EDMONTON. ALL RIGHTS RESERVED. Trademarks are owned or controlled by the Canadian Real Estate Association (CREA) and identify real estate professionals who are members of CREA (REALTOR®, REALTORS®) and/or the quality of services they provide (MLS®, Multiple Listing Service®)

Listing information last updated on April 12th, 2025 at 6:47pm MDT