

Courtesy Of Jeff D Jackson Of Bode

\$739,900 - 680 Kinglet Boulevard, Edmonton

MLS® #E4420497

\$739,900

4 Bedroom, 3.00 Bathroom, 2,499 sqft

Single Family on 0.00 Acres

Kinglet Gardens, Edmonton, AB

Pond backing lot, Main floor bedroom, 3 full bathrooms, Upgraded Quartz countertops, Stainless steel kitchen appliances, Bedrock smart home, side entry, 5 piece ensuite, Electric Fireplace, Upgraded spindle rail, stainless steel hood fan.

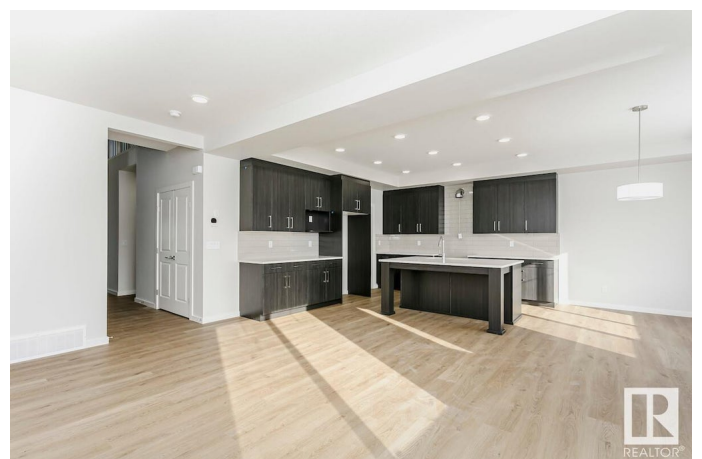
Built in 2024

Essential Information

MLS® #	E4420497
Price	\$739,900
Bedrooms	4
Bathrooms	3.00
Full Baths	3
Square Footage	2,499
Acres	0.00
Year Built	2024
Type	Single Family
Sub-Type	Detached Single Family
Style	2 Storey
Status	Active

Community Information

Address	680 Kinglet Boulevard
Area	Edmonton
Subdivision	Kinglet Gardens
City	Edmonton



County	ALBERTA
Province	AB
Postal Code	T5S 0S7

Amenities

Amenities	Ceiling 9 ft., No Animal Home, No Smoking Home
Parking Spaces	4
Parking	Double Garage Attached

Interior

Interior Features	ensuite bathroom
Appliances	None
Heating	Forced Air-1, Natural Gas
Fireplace	Yes
Fireplaces	Insert
Stories	2
Has Basement	Yes
Basement	Full, Unfinished

Exterior

Exterior	Wood, Fiber Cement, Vinyl
Exterior Features	Golf Nearby, Park/Reserve, Playground Nearby, Public Transportation, Schools, Shopping Nearby
Roof	Asphalt Shingles
Construction	Wood, Fiber Cement, Vinyl
Foundation	Concrete Perimeter

Additional Information

Date Listed	February 6th, 2025
Days on Market	57
Zoning	Zone 59

DATA IS DEEMED RELIABLE BUT IS NOT GUARANTEED ACCURATE BY THE REALTORS® ASSOCIATION OF EDMONTON. COPYRIGHT 2025 BY THE REALTORS® ASSOCIATION OF EDMONTON. ALL RIGHTS RESERVED. Trademarks are owned or controlled by the Canadian Real Estate Association (CREA) and identify real estate professionals who are members of CREA (REALTOR®, REALTORS®) and/or the quality of services they provide (MLS®, Multiple Listing Service®)

Listing information last updated on April 4th, 2025 at 6:17pm MDT