

Courtesy Of Jeff D Jackson Of Bode

\$529,900 - 17416 2 Street, Edmonton

MLS® #E4416180

\$529,900

3 Bedroom, 2.50 Bathroom, 1,994 sqft
Single Family on 0.00 Acres

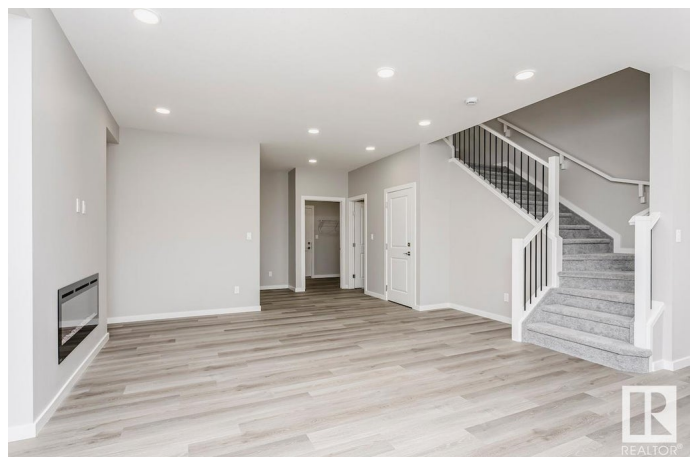
Marquis, Edmonton, AB

The Ruby P by Bedrock Homes is a stunning blend of modern design and family-friendly functionality. The main floor features an open-concept layout with 9â€™™ ceilings, seamlessly connecting the great room, complete with a sleek 50â€• linear fireplace, to the entertainerâ€™™s corner kitchen and dining area. The kitchen boasts quartz countertops, a large island & with a side entrance for potential future development. Upstairs, youâ€™™ll find three spacious bedrooms and a bonus room, with the primary suite offering a walk-through closet leading to the laundry room. Smart home technology, luxury vinyl plank flooring, and advanced stain-resistant carpet enhance the convenience and comfort of this thoughtfully designed home, located in the tranquil community of Marquis West, just minutes from Edmontonâ€™™s main ring road.

Built in 2024

Essential Information

MLS® #	E4416180
Price	\$529,900
Bedrooms	3
Bathrooms	2.50
Full Baths	2
Half Baths	1
Square Footage	1,994



Acres	0.00
Year Built	2024
Type	Single Family
Sub-Type	Detached Single Family
Style	2 Storey
Status	Active

Community Information

Address	17416 2 Street
Area	Edmonton
Subdivision	Marquis
City	Edmonton
County	ALBERTA
Province	AB
Postal Code	T5Y 4G6

Amenities

Amenities	No Animal Home, No Smoking Home
Parking Spaces	4
Parking	Double Garage Attached

Interior

Interior Features	ensuite bathroom
Appliances	None
Heating	Forced Air-1, Natural Gas
Fireplace	Yes
Fireplaces	None
Stories	2
Has Basement	Yes
Basement	Full, Unfinished

Exterior

Exterior	Concrete, Stone, Vinyl
Exterior Features	Park/Reserve, Playground Nearby, Schools, Shopping Nearby
Roof	Asphalt Shingles
Construction	Concrete, Stone, Vinyl
Foundation	Concrete Perimeter, Wood

Additional Information

Date Listed December 16th, 2024

Days on Market 117

Zoning Zone 51

DATA IS DEEMED RELIABLE BUT IS NOT GUARANTEED ACCURATE BY THE REALTORS® ASSOCIATION OF EDMONTON. COPYRIGHT 2025 BY THE REALTORS® ASSOCIATION OF EDMONTON. ALL RIGHTS RESERVED. Trademarks are owned or controlled by the Canadian Real Estate Association (CREA) and identify real estate professionals who are members of CREA (REALTOR®, REALTORS®) and/or the quality of services they provide (MLS®, Multiple Listing Service®)

Listing information last updated on April 12th, 2025 at 10:17am MDT