

\$3,900,000 - 16820 41 Avenue, Edmonton

MLS® #E4378304

\$3,900,000

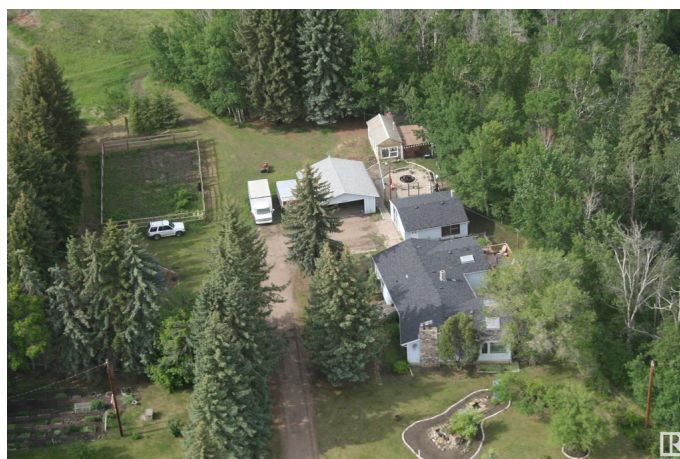
0 Bedroom, 0.00 Bathroom,
Single Family on 17.27 Acres

Glenridding Ravine, Edmonton, AB

17.27 Acres. Overlooking Edmonton's stunning Whitemud Creek to the east and Edmonton's future park to the north in prestigious Windermere neighbourhood. Potential stand alone medium density multifamily site. Within Edmonton's Glendridding Ravine Neighborhood Structure Plan. Minutes from the Anthony Henday Strategically located on the corner of 170 Street SW & 41 Avenue SW. \Legal Description: Plan 5395MC, Lot E. Future Potential Use: Potential Medium (or low) Residential/Stand Alone Multisite Present Zoning: Agricultural (AG) and Rural Residential (RR). Information herein and auxiliary information subject to becoming outdated in time, change, and/or deemed reliable but not guaranteed. Buyer to confirm information during their Due Diligence.

Essential Information

MLS® #	E4378304
Price	\$3,900,000
Bathrooms	0.00
Acres	17.27
Type	Single Family
Sub-Type	Vacant Lot/Land
Status	Active



Community Information

Address	16820 41 Avenue
Area	Edmonton
Subdivision	Glenridding Ravine
City	Edmonton
County	ALBERTA
Province	AB
Postal Code	T6W 1A6

Exterior

Exterior Features See Remarks

Additional Information

Date Listed	March 18th, 2024
Days on Market	396
Zoning	Zone 56

DATA IS DEEMED RELIABLE BUT IS NOT GUARANTEED ACCURATE BY THE REALTORS® ASSOCIATION OF EDMONTON. COPYRIGHT 2025 BY THE REALTORS® ASSOCIATION OF EDMONTON. ALL RIGHTS RESERVED.Trademarks are owned or controlled by the Canadian Real Estate Association (CREA) and identify real estate professionals who are members of CREA (REALTOR®, REALTORS®) and/or the quality of services they provide (MLS®, Multiple Listing Service®)

Listing information last updated on April 18th, 2025 at 4:47pm MDT