

\$0 - 14220 112 Avenue, Edmonton

MLS® #E4314132

\$0

0 Bedroom, 0.00 Bathroom,
Office on 0.00 Acres

Huff Bremner Estate Industrial, Edmonton, AB

• 2 spaces available - 1,113 sq.ft. or 2,066 sq.ft. • Tenants have access to common area lounge, auditorium and 4 secure levels of parking • Lower Level is open concept available immediately • Second floor is currently shell space ready for interior improvements • High level of security • Recently upgraded elevator • Quick access to Yellowhead Trail, Stony Plain Road and St.Albert Trail • Parking ratio is approximately 5 stalls per 1,000 sq.ft.

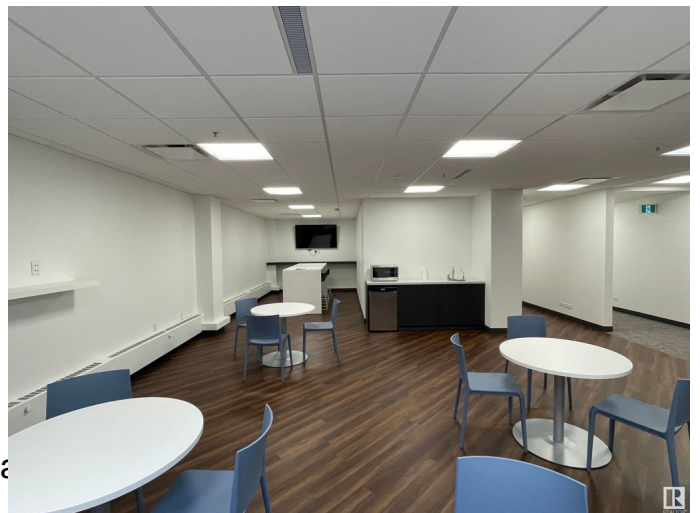
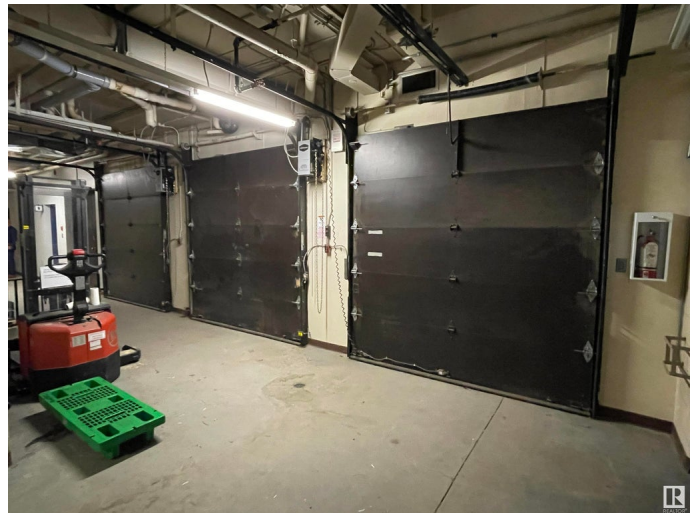
Built in 1950

Essential Information

MLS® #	E4314132
Bathrooms	0.00
Acres	0.00
Year Built	1950
Type	Office
Status	Active

Community Information

Address	14220 112 Avenue
Area	Edmonton
Subdivision	Huff Bremner Estate Industrial
City	Edmonton
County	ALBERTA
Province	AB



Postal Code T5M 2T8

Exterior

Exterior Brick

Construction Brick

Additional Information

Date Listed September 20th, 2022

Days on Market 927

Zoning Zone 40

DATA IS DEEMED RELIABLE BUT IS NOT GUARANTEED ACCURATE BY THE REALTORS® ASSOCIATION OF EDMONTON. COPYRIGHT 2025 BY THE REALTORS® ASSOCIATION OF EDMONTON. ALL RIGHTS RESERVED. Trademarks are owned or controlled by the Canadian Real Estate Association (CREA) and identify real estate professionals who are members of CREA (REALTOR®, REALTORS®) and/or the quality of services they provide (MLS®, Multiple Listing Service®)

Listing information last updated on April 4th, 2025 at 2:47pm MDT